

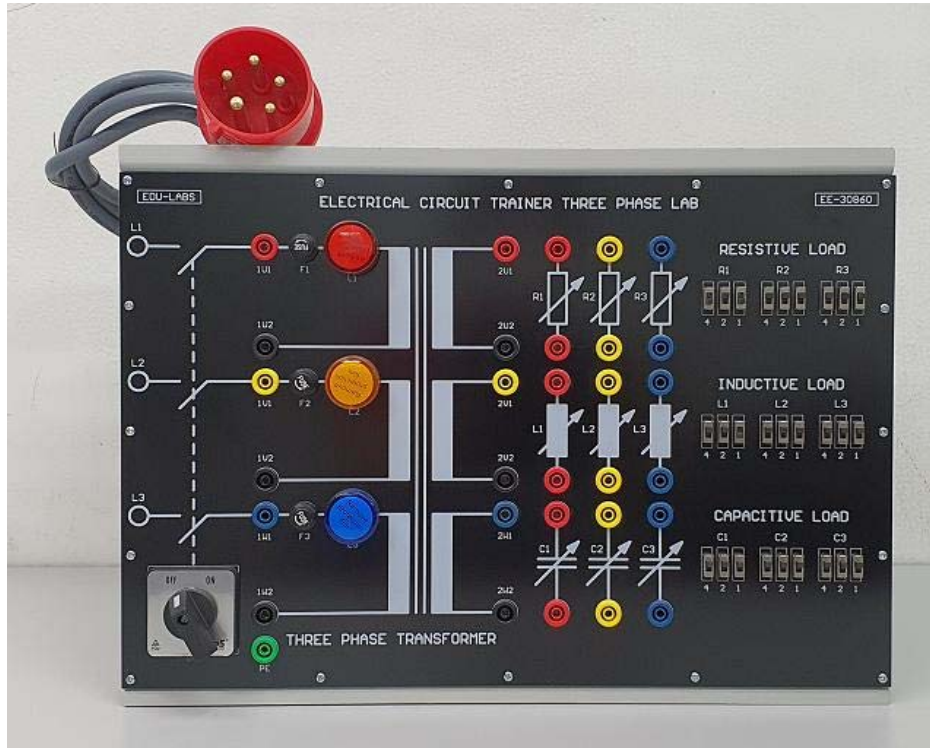
# ELECTRICAL CIRCUIT TRAINER THREE PHASE LAB

EE-30860

EDU-LABS



BUATAN MALAYSIA  
MADE IN MALAYSIA



The Three Phase Lab with Three Phase Low Voltage Power Supply is an elite training system for the electrical laboratories. There is a three phase low voltage supply that provides 18 V of low voltage which is highly safe. This system is valuable in understanding the basic concepts of Three phase circuits like star-delta connections, their phase and line voltages, currents etc. Being different from the present scenario, this system is designed in such a way that a student can himself make connections of three phase circuits because all the experiments are performed on low voltage. The product is designed with keeping in mind that R, L, C combination can be connected in series as well as in parallel in Three Phase circuits.

## **Features :**

Designed considering all the safety standards

- i) Hands on Practice
- ii) Standalone operation
- iii) Test points are provided to measure line and phase parameters

Experiments that can be performed:

- a) Study of Three phase low voltage power supply
- b) Study of Three phase star connection
- c) Study of Three phase delta connection
- d) Study of Three phase circuits with balanced load
- e) Study of Three phase circuits with unbalanced load
- f) Study of Three phase power measurement

### **Specifications:**

- Three Phase Low Voltage Power Supply
- Input: Three Phase Mains (240V Phase voltage, 415V Line voltage 50Hz)  $\pm$  10%
- Outputs: 18V Phase voltage, 28V line voltage 50Hz  $\pm$  10%
- Power Switch: Three Phase
- Resistive Load, Capacitive Load & Inductive Load:
  - Can be connected in Series, Parallel, Star and Delta configurations.
  - Can be connected to AC Single and 3 Phase sources.
  - Controlled by 3 x 3 switches for 7 steps selection.
  - Resistors: 220 $\Omega$ , 330 $\Omega$ , 500 $\Omega$
  - Capacitors: 10 $\mu$ F, 22 $\mu$ F and 47 $\mu$ F
  - Inductors: 200mH, 33mH, 560mH
- Dimension (mm) : W 365  $\times$  D 265  $\times$  H 120

### **Accessories:**

- 1 set 5 Pin 415VAC, 50Hz Power Plug
- 1 set of Connecting leads

### **Manual:**

The system comes complete with experimental with solution/answers, operational and maintenance manuals in soft copy

**All Product, Product Specifications And Data Are Subject To Change Without Notice To Improve Reliability, Function Or Design Or Otherwise.**